

mini
A SLICK GUIDE TO ...



SIMPRO



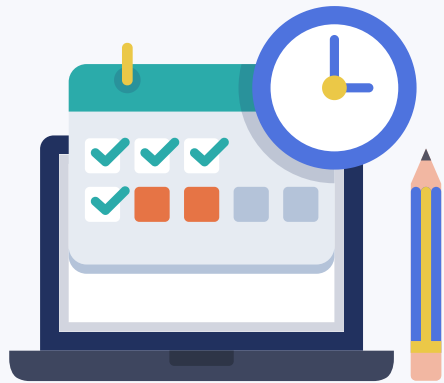
What is *simPRO*

A cloud-based solution, simPRO offers a range of features for the management of service jobs, project work and asset maintenance, including:

- Comprehensive **scheduling, estimating** and **invoicing**
- Real-time office to field **connectivity**
- Streamlined **inventory management**
- **Supplier catalogue** and **pricing** from a single system
- **Integrations** with industry-leading accounting packages, **Xero, Quickbooks** and **Sage**
- **70+ reports** for accurate business insights.

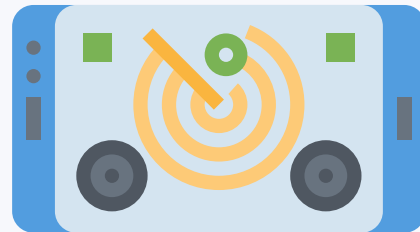


BENEFITS



Bulk Scheduling

simPRO can bulk-schedule several field staff at once, including equipment to be used, and will alert you regarding any scheduling conflicts.



Geofencing

The geofencing feature enables the definition of perimeters in the field, sending out alerts whenever a vehicle has entered or exited this area.



Quotes in the Field

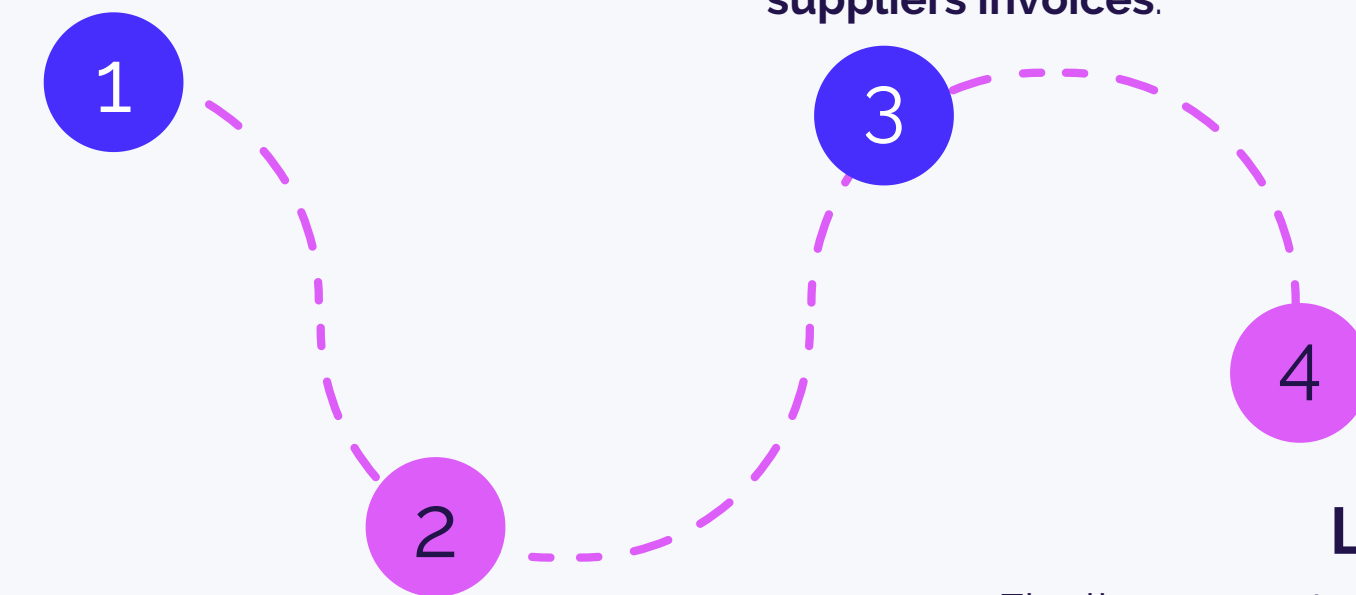
Using simPRO Mobile allows field staff to create professional quotes with custom branding while on-site. Multiple quote options are available with both images and video.



Xero Integration

Accounts Integration

Within **System Set-Up**, visit the **Accounts Integration** tab and select **Xero**.



Invoice Approval

Once you click on Xero, decide whether you would like invoices to be **automatically** or **manually** approved..

Exports

You also have the option to select the information you would like transferred between simPRO and Xero, including **customers, payments, suppliers, invoices, and suppliers invoices.**

Log-in

Finally, connect your Xero account by choosing **Utilities** on the Home page, clicking **Xero**, and **logging in** to your account.





Sllick